

# \$474,900 - 10 Beardsley Crescent, Lacombe

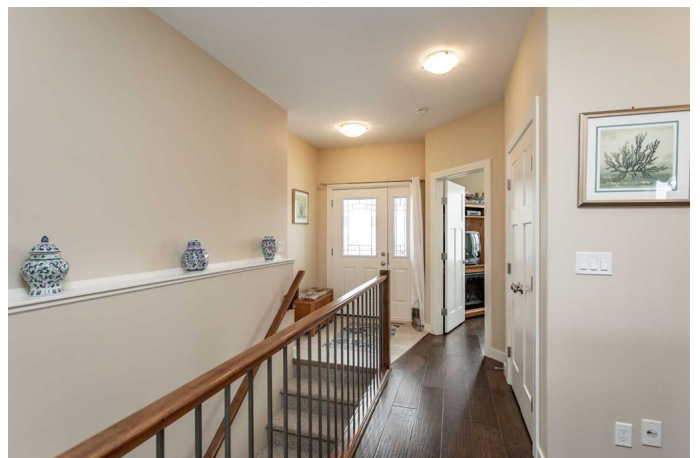
MLS® #A2194629

**\$474,900**

4 Bedroom, 2.00 Bathroom, 1,019 sqft  
Residential on 0.07 Acres

Henner's Landing, Lacombe, Alberta

Get ready to enjoy condominium living at its finest at the Hennes Lakeside Villas! This custom built bungalow is fully finished with beautiful finishes throughout and it shows like a SHOW HOME! From the minute you drive up you will appreciate the condominium project and its pride of ownership that is evident throughout the cul de sac! Open the front door and you are greeted by a tiled entrance with the den/second bedroom within close proximity - great for the home based business/personal office of guest bedroom.. Step into the main living space with open concept kitchen/dinette and living room - the views to the north overlooking the treed reserve area is breathtaking! Beautiful white cabinetry, 2" laminate countertops, lovely backsplash, stainless steel appliances - this kitchen is very functional and easy to entertain family and friends. Primary bedroom is spacious with a shared four piece bathroom, main floor laundry and beautiful white cabinetry and trim throughout! The basement is fully finished with 2 more bedrooms, family room plus a 4 piece bathroom. In floor heat is operational and keeps the home cozy warm during the colder months! This home shows like new and you can start enjoying condo living this winter - no more shoveling snow and in the summer you can enjoy the well groomed grounds without doing the work! No neighbors behind you and you can enjoy morning coffee in the spring and summer enjoying nature's landscape from your back deck. Walking



trails, Burman University amenities are just outside your step! Condo fees are \$137 per month and gives you the freedom to go travel and not worry about yard care! This is a great condominium project in a fantastic neighborhood!

Built in 2015

### **Essential Information**

MLS® #	A2194629
Price	\$474,900
Bedrooms	4
Bathrooms	2.00
Full Baths	2
Square Footage	1,019
Acres	0.07
Year Built	2015
Type	Residential
Sub-Type	Semi Detached
Style	Side by Side, Bungalow
Status	Active

### **Community Information**

Address	10 Beardsley Crescent
Subdivision	Henner's Landing
City	Lacombe
County	Lacombe
Province	Alberta
Postal Code	T4L 0G4

### **Amenities**

Amenities	None
Parking Spaces	2
Parking	Single Garage Attached
# of Garages	1

### **Interior**

Interior Features Kitchen Island, Laminate Counters, No Animal Home, No Smoking

	Home, Open Floorplan, Pantry, Vinyl Windows
Appliances	Dishwasher, Garage Control(s), Microwave Hood Fan, Refrigerator, Stove(s), Washer/Dryer Stacked
Heating	In Floor, Forced Air
Cooling	None
Fireplace	Yes
# of Fireplaces	1
Fireplaces	Gas
Has Basement	Yes
Basement	Finished, Full

### Exterior

Exterior Features	None
Lot Description	Backs on to Park/Green Space, Cul-De-Sac, Landscaped, Lawn, No Neighbours Behind, Street Lighting, Interior Lot
Roof	Asphalt Shingle
Construction	Vinyl Siding, Wood Frame
Foundation	Poured Concrete

### Additional Information

Date Listed	February 15th, 2025
Days on Market	47
Zoning	R4

### Listing Details

Listing Office	RE/MAX real estate central alberta
----------------	------------------------------------

Data is supplied by Pillar 9â„¢ MLSÂ® System. Pillar 9â„¢ is the owner of the copyright in its MLSÂ® System. Data is deemed reliable but is not guaranteed accurate by Pillar 9â„¢. The trademarks MLSÂ®, Multiple Listing ServiceÂ® and the associated logos are owned by The Canadian Real Estate Association (CREA) and identify the quality of services provided by real estate professionals who are members of CREA. Used under license.